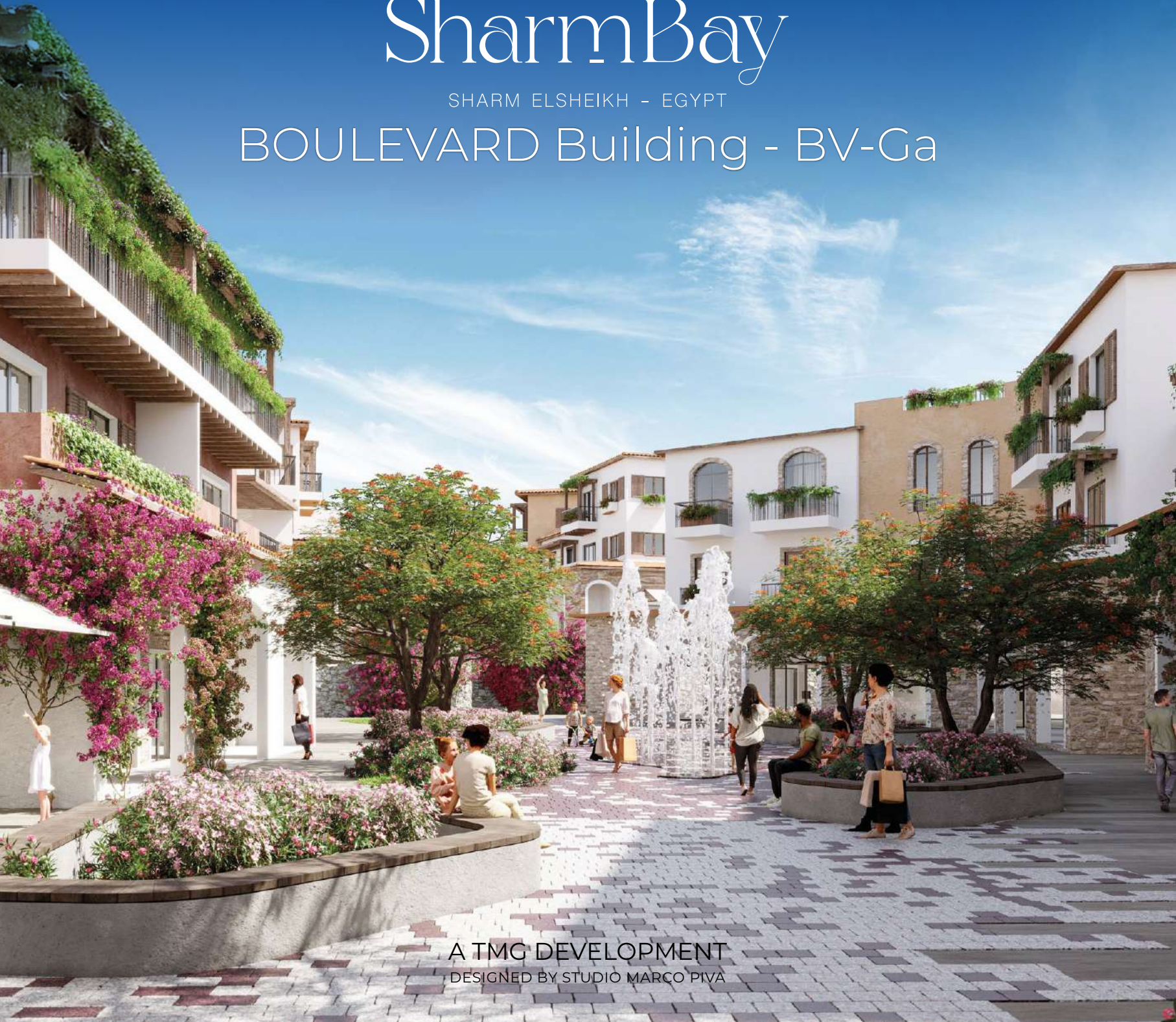


Sharm Bay

SHARM ELSHEIKH - EGYPT

BOULEVARD Building - BV-Ga



A TMG DEVELOPMENT
DESIGNED BY STUDIO MARCO PIVA



Boulevard

Building - BV-Ga

“Boulevard takes its name from its role as the sunlit path that moves through the project. The place links the strip mall Porta del Sole to the center of the marina and supports a steady flow of movement between both areas.

You move through a line of commercial and residential spaces that sit along the route. The layout shows the warmth and energy of the sun and keeps the experience clear and direct for people who use the space each day.

The location builds a clean connection across the project. It works as a bright route that shapes the character of the area and supports the way people interact with the wider setting.”



Garden View

Boulevard

Building - BV-Ga

First Floor

- ▶ Total Area - Unit 11 97 m²
- ▶ Total Area - Unit 12 142 m²



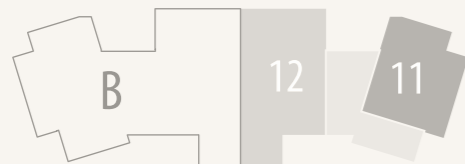
Boulevard

Building - BV-Ga

Unit 11 First Floor

Area 97 m²

Reception + Kitchen	3.95 X 7.43 m
Bedroom	3.75 X 4.50 m
Bathroom	1.95 X 2.47 m
Terrace	10.00 m ²



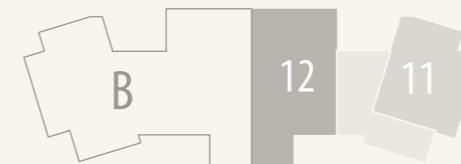
Boulevard

Building - BV-Ga

Unit 12 First Floor

Area 142 m²

Living	3.95 X 3.95 m
Dining	3.20 X 3.40 m
Kitchen	2.95 X 2.55 m
Master Bedroom	3.95 X 3.75 m
Master Bathroom	1.95 X 2.30 m
Guest Bathroom	1.35 X 1.87 m
Bedroom	3.80 X 3.95 m
Bathroom	1.95 X 2.40 m
Terrace	10.35 m ²





Boulevard

Building - BV-Ga

Second Floor

- ▶ Total Area - Unit 21 97 m²
- ▶ Total Area - Unit 22 141 m²



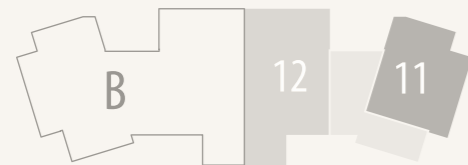
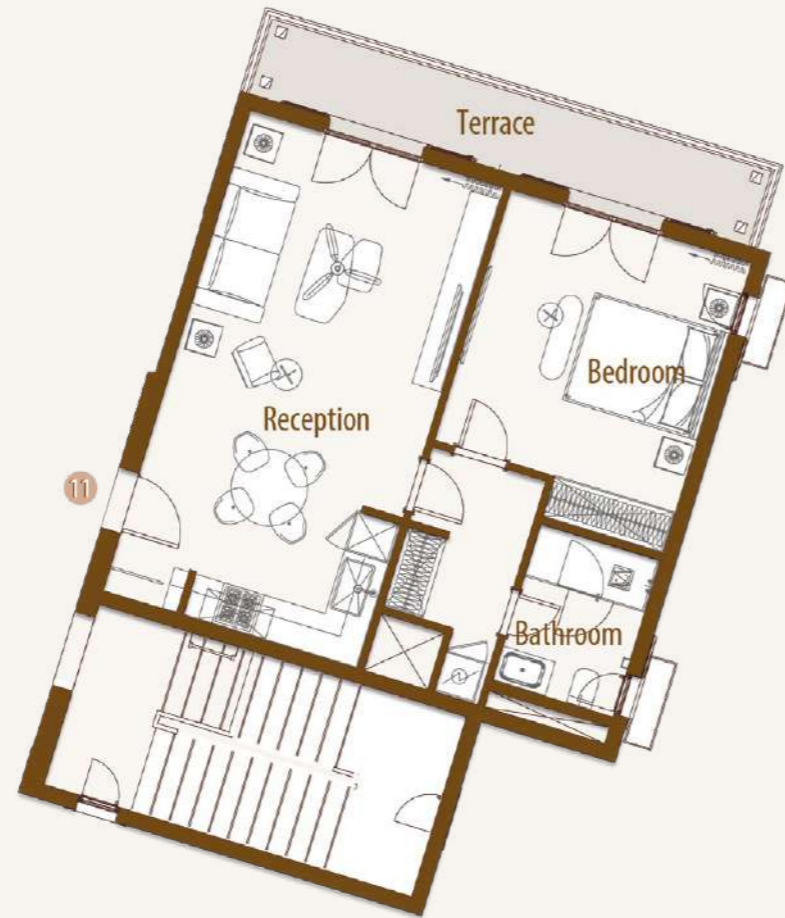
Boulevard

Building - BV-Ga

Unit 21 Second Floor

Area 97 m²

Reception + Kitchen	3.95 X 7.43 m
Bedroom	3.75 X 4.50 m
Bathroom	1.95 X 2.47 m
Terrace	9.66 m ²



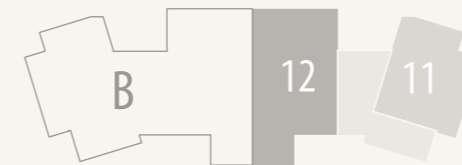
Boulevard

Building - BV-Ga

Unit 22 Second Floor

Area 141 m²

Living	3.95 X 3.95 m
Dining	3.20 X 3.40 m
Kitchen	2.95 X 2.55 m
Master Bedroom	3.95 X 3.75 m
Master Bathroom	1.95 X 2.30 m
Guest Bathroom	1.35 X 1.87 m
Bedroom	3.80 X 3.95 m
Bathroom	1.95 X 2.40 m
Terrace	9.21 m ²



Boulevard Building - BV-Ga

Disclaimer

Disclaimer:

1. Rooms' measurements are from the centerline of walls and the unit total area includes external walls thickness.
2. Diagrams are for illustrative purposes only and not to scale.
3. All finishes, furniture, sanitary fixtures setup, fences and windows openings shown in the accompanying renderings are for illustrative purposes only.
4. All landscaping visuals are for illustrative purposes only and are not included in the property.
5. All renderings and other visual materials, designs, façades are for demonstrative purposes only and are subject to change.

تنويه:

١. الأبعاد الموضحة للفراغات هي الأبعاد بين محاور الحوائط، والمسطح الأجمالي يشمل سمك الحوائط الخارجية.
٢. الرسومات الموضحة بالكتالوج بدون مقياس رسم وهي للتوضيح فقط.
٣. التشطيبات، والفرش، وتوزيع الأجهزة الصحية، والأسوار وفتحات النوافذ بالكتالوج، هي للتوضيح فقط وقابلة للتغيير.
٤. عناصر تنسيق الحدائق (العامة والخاصة) بالكتالوج للتوضيح والأخراج الفني فقط، وهي غير مدرجة في الوحدة المباعة.
٥. عناصر الإخراج الفني للتصميمات والواجهات، هي وسائل أظهار مرئي فقط وخاضعة للتغيير.



Boulevard Building - BV-Ga

Finishing Specification

Reception & Dining

- ▷ Flooring: High quality porcelain/ Ceramic
- ▷ Walls: Washable Water-based paints
- ▷ Ceiling: Washable paint on Gypsum board ceiling or plaster

Bathrooms & Kitchens

- ▷ Flooring: High quality porcelain / Ceramic
- ▷ Walls: High quality porcelain/ Ceramic and waterproof paint
- ▷ Ceiling: Washable paint on Gypsum board ceiling

Sanitary Fixtures: Local production

Bedrooms:

- ▷ Flooring: High quality porcelain / Ceramic
- ▷ Walls: Washable Water-based paints
- ▷ Ceiling: Washable paint on Gypsum board ceiling

Facades:

- ▷ Weather resistant paints and stone cladding
(Colors may slightly change during construction)

Building Entrance:

- ▷ Flooring: High quality porcelain / Ceramic
- ▷ Walls: High quality porcelain or Local marble slabs / Ceramic

- ▷ Ceiling: Washable Water-based paints

Stairs:

- ▷ High quality Porcelain or local marble
- ▷ Stairs Ceiling & Walls: Washable Water-based paints

Terraces:

- ▷ Flooring: High Quality Local ceramic tiles
- ▷ Walls & Ceiling: Weather resistant paints

Doors:

- ▷ 5 cm thickness HPL doors & high-quality hardware

External Windows:

- ▷ Aluminum profiles and double glazing

Electrical Wiring: All wiring and accessories are high quality local materials

Air Conditioning:

- ▷ VRV system and Ex. Fans are included.

(laundry caseworks, Cabinets, wooden kitchen units, Closets, TV units and vanities) aren't included





FUTURE BUILDERS



19691



www.talaatmoustafa.com



S M P